
KIT PART NUMBER 6730014
INSTRUCTIONS FOR INSTALLING
PAPER GUIDE AND DEFLECTOR ATTACHMENT FOR
673 AND 677 HOT DRINK CENTER 2 MACHINES.

CHECK THE PARTS RECEIVED IN THIS KIT WITH THE PARTS LIST IN THESE INSTRUCTIONS. IF ANY PARTS ARE MISSING CONTACT THE CRANE MERCHANDISING SYSTEMS' PARTS DEPARTMENT AT 1-800-621-7278.

Read these instructions carefully before installing the kit.
Keep these instructions for part numbers and for future reference.

THIS KIT CONTAINS THE FOLLOWING:

PART NUMBER	DESCRIPTION	QTY
6734075	TEMPLATE - DRILL	1
6734076	GUIDE - PAPER ASSEMBLY	1
6734077	DEFLECTOR - FILTER PAPER - LEFT (SMALL HOLE)	1
6734078	DEFLECTOR - FILTER PAPER - RIGHT (LARGE HOLE)	1
6734079	LABEL - PAPER PATH	1
6734080	LABEL - VEND MARKER	1
1437204	SCREW - #8 - 10x.38 HEX HD. TF	4

WARNING Electrical Shock Hazard - Contact with live electrical parts can cause death or serious injury.

1. Read these instructions carefully before installing this kit.
2. **Unplug the machine power cord from the wall receptacle before installing this kit.** Failure to do so could result in an electrical shock.
3. Open the door of the machine and locate the Brewer Assembly and remove it from the machine. Position Brewer Assembly as shown in Figure 1.



Figure 1

-
4. Position the drill template a) flat against the brewer assembly surface b) up against the rectangular boss and c) flush with the side of the brewer as shown in Figure 2. Clamp the template securely and drill (4) holes through the brewer using the template as a guide, using a 9/64" (.140 dia.) drill bit.



Figure 2

5. Attach the Paper Assembly Guide with (4) screws in the holes drilled in Step 4.



Figure 3

-
6. Turn the Brewer Assembly over and remove the paper guide by inserting a flat screwdriver into the release notch of the tab on the brewer. See Figure 4.

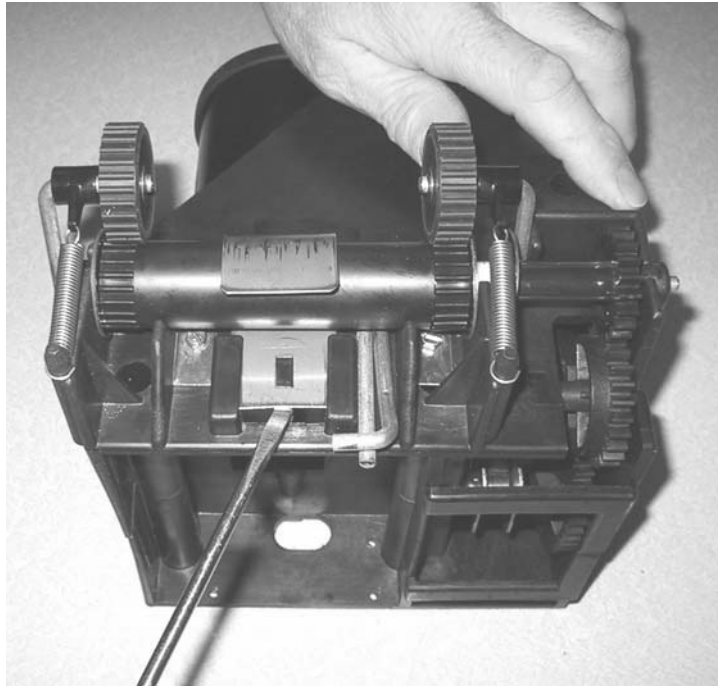


Figure 4

7. Remove the Idler Roller Assembly Springs from the bosses as in Figure 5.

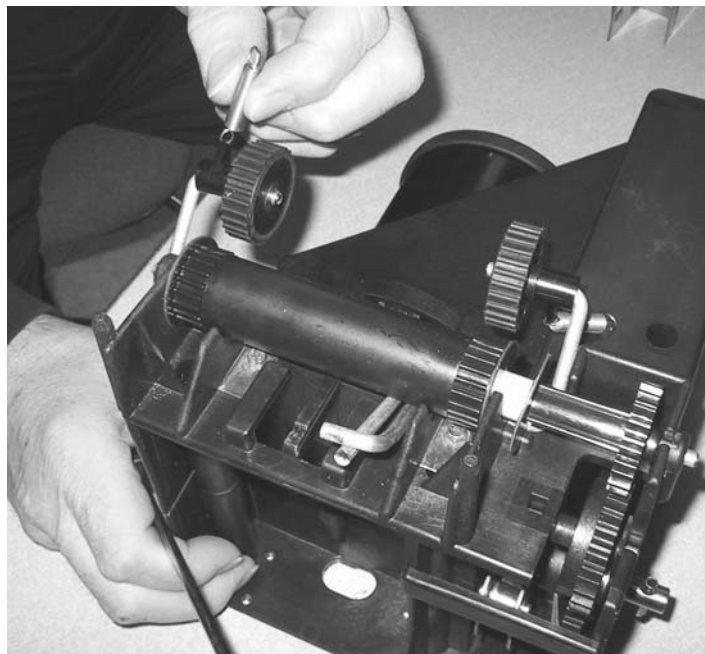


Figure 5

8. Press out the paper shaft drive axle from the front of the housing until the Paper Roller Extrusion Shaft assembly is free to rotate away from the Brewer (Figure 6). Remove the whole assembly (Figure 7).

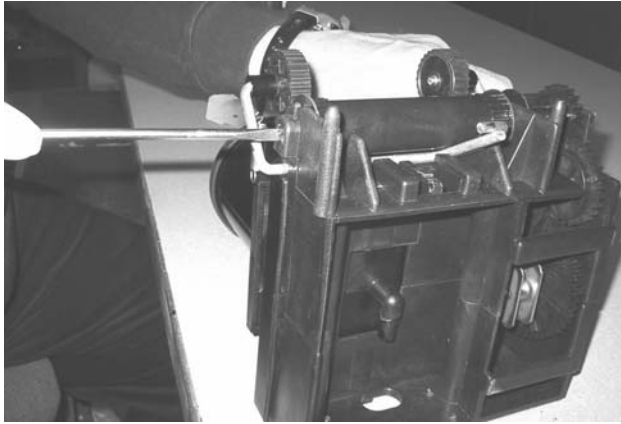


Figure 6

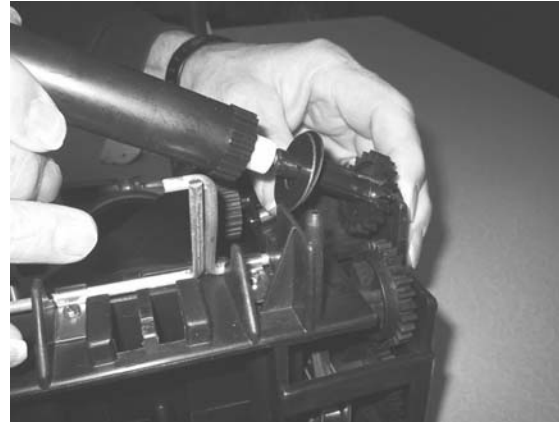


Figure 7

9. Disassemble the assembly by removing and replacing the right washer (ref. large hole) with the right hand Deflector p/n #6734078. (Figure 8). Remove and replace the left hand washer (ref. small hole) with the left hand Deflector p/n #6734077. Discard removed washers.

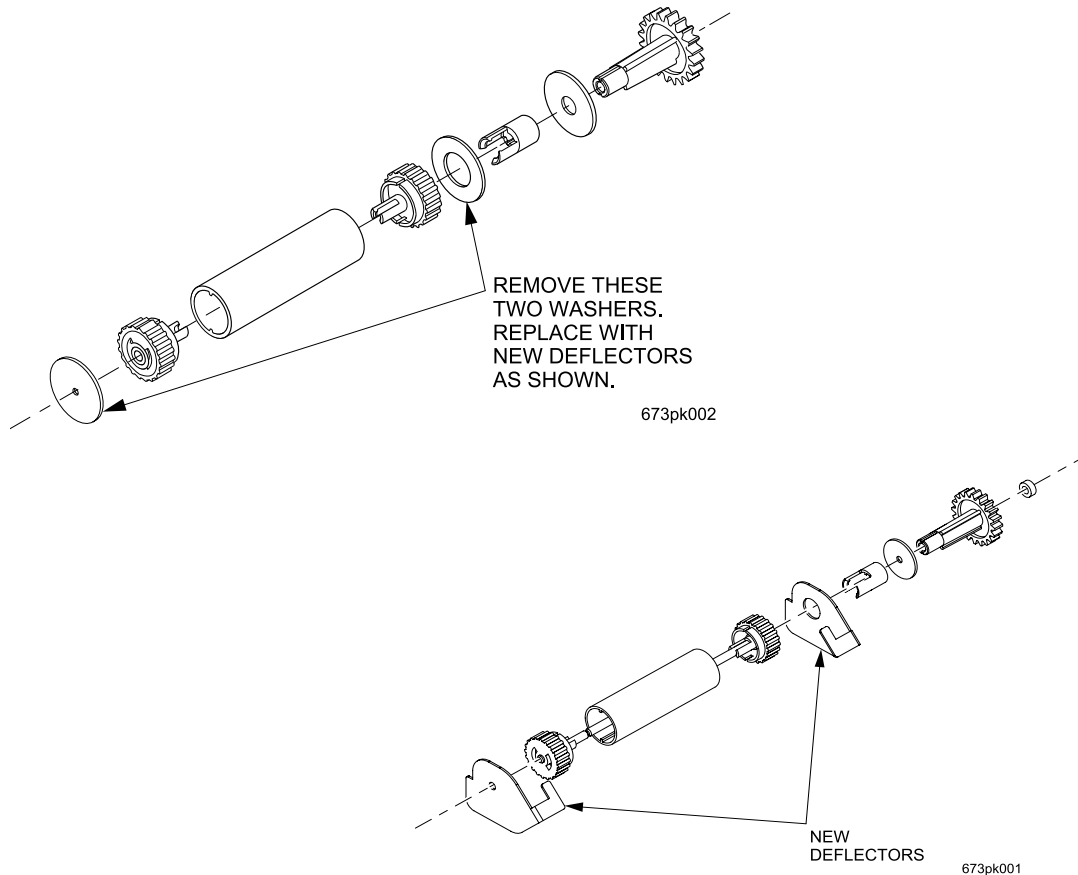


Figure 8

10. Reattach the Paper Roller Extrusion Shaft assembly into the brewer. Note that the deflector is on the inner side of the rib, and the remaining plastic washer on the outer (Figure 9). Also note that the notch on each new deflector is below the wire from the Idler Roll Arms (Figure 10).



Figure 9

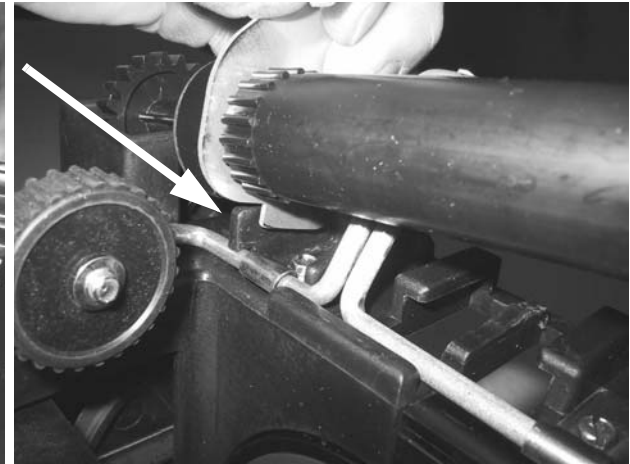


Figure 10

11. Reinstall the Idler Roller Assembly Springs. Make sure to position the Idler Roller Assembly wire forms as shown in Figure 11.

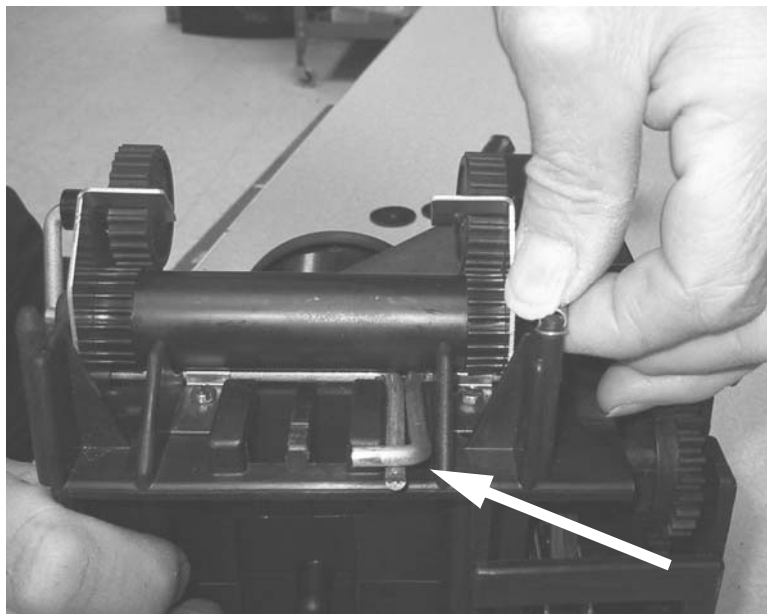


Figure 11

12. Reinstall the paper guide in the housing notch as shown in Figure 12.



Figure 12

13. If the paper guide is bent from removal, be sure to flatten the area across the rectangle notch before re-installing.

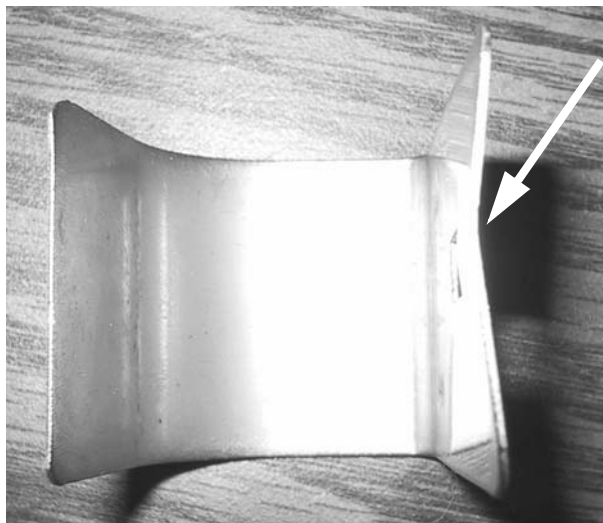


Figure 13

-
14. Reinstall the brewer back into the machine. Make sure the path of the water tube is as shown in Figure 14. The paper should not drag on the tube once it is installed.



Figure 14

15. Important! Make note of the paper path once the brewer is reinstalled. The paper feeds *under* the rod on the bracket.

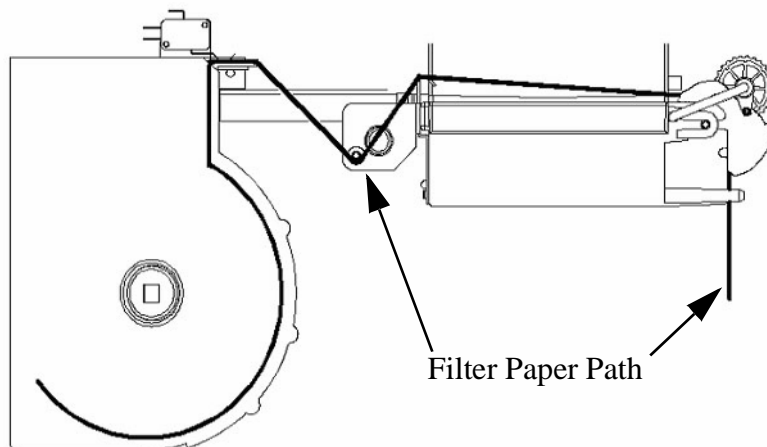


Figure 15

16. Remove the paper housing cover and install labels as shown in Figure 16, then replace paper housing cover.

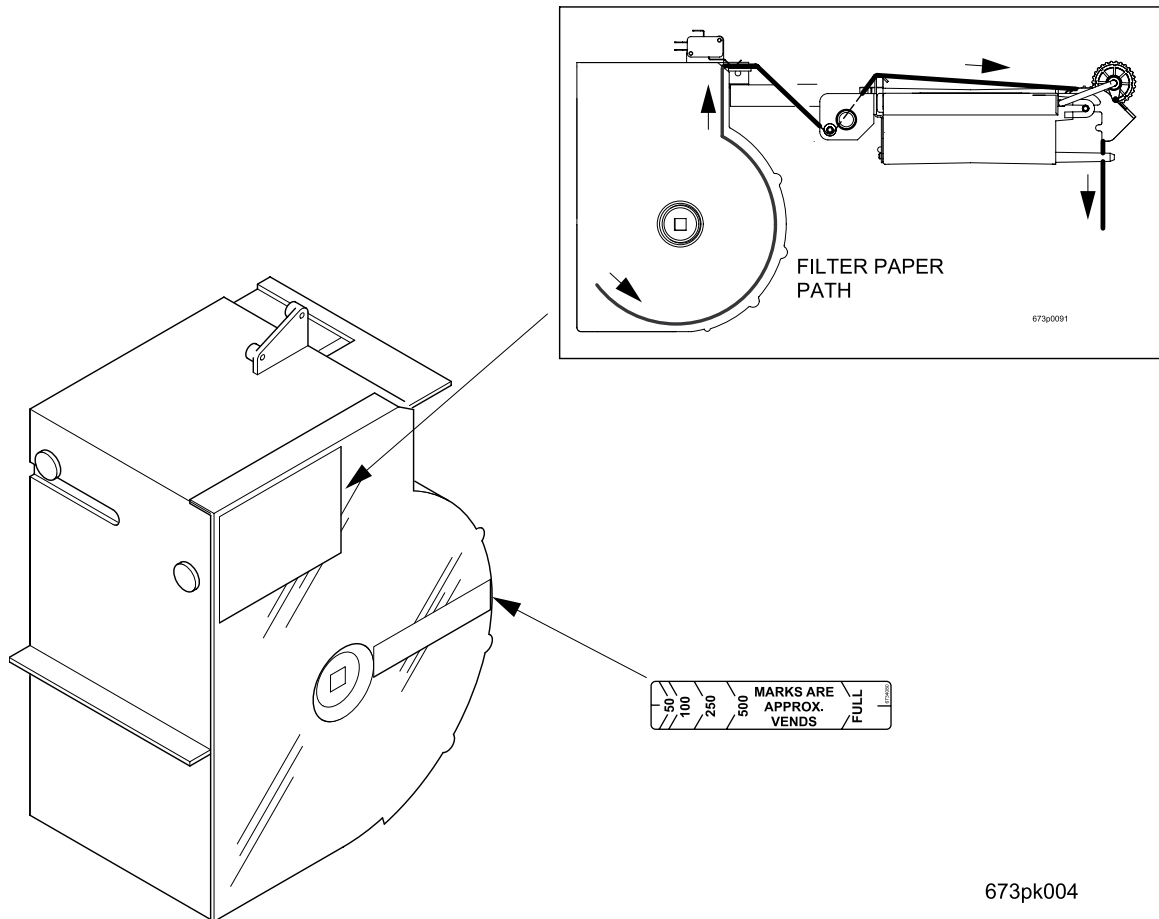


Figure 16